

My God, why have you abandoned me?

Psalm 22(21)

CJ Olding



Wheatsheaf Music

Singing together, praying together

Capo 1 **Introduction** *Slow, reflective* (♩ = 45)

Em Bm/D Em⁶/C# Am⁷/C Bm⁷ C Am/C Em

Refrain

Em Bm/D Em⁶/C# Am⁷/C Bm⁷ C Am/C ^{1.} Em

My God, my God, why have you a - bandoned me?

Verses *With urgency* (♩ = 60)

^{2.} Em Em *mf* B⁷/D#

1. All who see me de - spise me, hurling
 2. Dogs are circ - ling a - round me, a —

3. They di - vide my clothes a - mong them, they
 4. I will tell of you to my peo - ple and

Em⁷/D F^{#7}/C[#] B B/A *f* Em/G B⁷/F[#]

in - sults, shak - ing their heads. — 'You trust in the Lord: God will
gang of the e - vil att - ack me. They pierce my — hands and my

gam - ble for my robe. — O Lord, do not leave me a -
praise you where they gath - er. 'Give praise, all who fear — the

Slower (♩ = 50)
Em/G Em⁶/G *mf* C Em⁷/B F^{#7}/C[#]

save you! and — free you if you are a
feet. — I can count ev' - ry one of my

lone, you are my strength, — come quick - ly to
Lord; Ja - cob's child - ren, — give God —

More slowly (♩ = 40) B G^{maj7} F^{maj7} E^b B *D.S. al Coda*

friend, and — free you if you are a friend.
bones, I can count ev' - ry one of my bones.

help me! You are my strength, come quick - ly to help me!
glo - ry. Re - vere your — Lord, Is - ra - el. —

Final refrain

Em Bm/D Em⁶/C# Am⁷/C Bm⁷ C C/B Am Am⁶/F# E⁵

mp
My God, my God, why have you a - bandoned me?

mp *p* *pp*

Detailed description: The image shows a musical score for a 'Final refrain'. It consists of a vocal line and a piano accompaniment. The key signature has three flats (B-flat, E-flat, A-flat), and the time signature is 2/2. The vocal line starts with a half note G2, followed by a quarter rest, then a half note G2, and a quarter rest. The piano accompaniment starts with a half note G2, followed by a quarter rest, then a half note G2, and a quarter rest. The piano accompaniment features a series of chords in the right hand and bass notes in the left hand. The dynamics range from mezzo-piano (mp) to pianissimo (pp). The lyrics are 'My God, my God, why have you a - bandoned me?'. The guitar chords are listed above the staff: Em, Bm/D, Em⁶/C#, Am⁷/C, Bm⁷, C, C/B, Am, Am⁶/F#, and E⁵.

Melody instrument in C

Introduction

Slow, reflective ($\text{♩} = 45$)

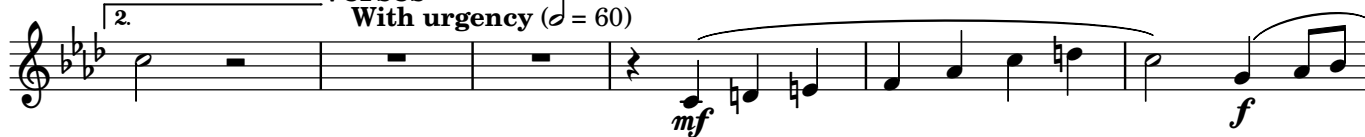


Refrain



Verses

With urgency ($\text{♩} = 60$)



D.S. al Coda



Final refrain



Licensing



This work is licensed under the Creative Commons Attribution-NonCommercial-NoDerivatives 4.0 International licence. To view a copy of this license, visit <https://creativecommons.org/licenses/by-nc-nd/4.0/>

You are free to copy and redistribute the material in any medium or format. You must give appropriate credit and provide a link to the license. You may do so in any reasonable manner, but not in any way that suggests the licensor endorses you or your use. You may not use the material for commercial purposes. If you remix, transform or build upon the material, you may not distribute the modified material. You may not apply legal terms or technological measures that legally restrict others from doing anything the licence permits.

The author asserts his moral right to be identified as the creator of this work.

This publication includes an **assembly box**, an edition for congregation which can be copied and reproduced in service sheets, projected displays and other worship aids for one time use. The copyright attribution must not be removed from the box when copied. Approval must be requested from the publisher to reproduce this piece in hymn books and other permanent worship aids.

My God, why have you abandoned me?

CJ Olding

Refrain

The musical notation for the refrain is written on a single staff in treble clef. The key signature has three flats (B-flat, E-flat, A-flat), and the time signature is 3/2. The melody consists of two phrases. The first phrase, 'My God, my God,', is in 3/2 time and consists of four notes: a quarter note G4, a quarter note A4, a quarter note B-flat4, and a half note C5. The second phrase, 'why have you a - bandoned me?', is in 2/2 time and consists of five notes: a quarter note D5, a quarter note E5, a half note F5, a quarter note G5, and a half note A5. The piece ends with a double bar line.

Words and music © 2008 CJ Olding. All rights reserved. CC BY-NC-ND 4.0. Published by
Wheatsheaf Music (www.wheatsheafmusic.co.uk).
