

# 'Glory' and 'Praise'

## Lenten Gospel Acclamations



**Wheatsheaf Music**  
Singing together, praying together

CJ Olding

### Refrain 1

$\text{♩} = 52$   
Dm Gm C/E F A<sup>7</sup>/E Dm B $\flat$  Gm<sup>6</sup>/B $\flat$  Dm/A A *Fine*

Glo-ry and praise to you, O Christ. Glo-ry and praise to you, O Christ.

### Refrain 2

Dm Gm C/E F A<sup>7</sup>/E Dm B $\flat$  Gm<sup>6</sup>/B $\flat$  Dm/A A *Fine*

Praise and honour to you, Lord Jesus. Praise and honour to you, Lord Je - sus.

### Refrains 3 and 4

Dm Gm C/E F A<sup>7</sup>/E Dm B $\flat$  Dm/A A *Fine*

3. Praise to you, O Christ, king of e - ter - nal glo - ry!  
4. Glo - ry to you, O Christ, you are the Word of God!

## Verses (Ash Wednesday / General Lent)

Har - den not your hearts to-day but lis - ten to the voice of the Lord.

## Verses (Sundays Year A)

1. We do not live on bread\_a - lone but feed on the word, the word of the Lord.  
 2. Out of the cloud God's voice\_was heard: This is my own Son, now lis - ten to him.  
 3. Give us your liv - ing wa - ter to drink so that we may ne - ver thirst\_a - gain.  
 4. I am the light, the light of the world. If you\_ be - lieve, my light will be yours.  
 5. I am the re - sur - rection and life, be - lieve\_ in me and you'll ne - ver die.

## Verses (Sundays Year B)

1. We do not live on bread\_a - lone but feed on the word, the word of the Lord.  
 2. Out of the cloud God's voice\_was heard: This is my own Son, now lis - ten to him.  
 3. I am the re - sur - rection and life, be - lieve\_ in me and you'll ne - ver die.  
 4. Loving the world, God gave us his son so all who be - live will have life through him.  
 5. If you would serve, you must fol - low me. Wher - ev - er I am, my servants shall be.

## Verses (Sundays Year C)

1. We do not live\_ on bread\_a - lone but feed on the word,\_the word of the Lord.  
 2. Out of the cloud. God's voice\_ was heard: This is my own Son,\_ now lis - ten to him.  
 3. So says the Lord:\_ re - pent of your sins. The kingdom is heav - en is close\_ at hand.  
 4. I will return to my fa - ther and say that I\_ have sinned against heav - en and you.  
 5. Come back to me\_ now, so says the Lord, for I am com - pass - ion, mer - cy and love.

## Verses (Holy Week) D

Chords: D, Gm/B $\flat$ , C, F/A

**Palm Sun & Good Fri.** Je - sus Christ was humb - ler yet,  
But then God raised him up to the heights and

**Maundy Thu.** I give to you a law that is new: now

Chords: B $\flat$ , G/B, E, A

**PS & GF.** ev - en ac - cept - ing death on a cross.  
gave him the name a - bove ev' - ry name.

**MT.** love one an - o - ther as I love you.

*D.C. al Fine*

## Performance notes

Any of the refrains may be used in place of the one given in the Lectionary.

## Licensing



Part of this work is licensed under the Creative Commons Attribution-NonCommercial-NoDerivatives 4.0 International licence. To view a copy of this license, visit <https://creativecommons.org/licenses/by-nc-nd/4.0/>

You are free to copy and redistribute the material in any medium or format. You must give appropriate credit and provide a link to the license. You may do so in any reasonable manner, but not in any way that suggests the licensor endorses you or your use. You may not use the material for commercial purposes. If you remix, transform or build upon the material, you may not distribute the modified material. You may not apply legal terms or technological measures that legally restrict others from doing anything the licence permits.

The author asserts his moral right to be identified as the creator of this work.

This publication includes an **assembly box**, an edition for congregation which can be copied and reproduced in service sheets, projected displays and other worship aids for one time use. The copyright attribution must not be removed from the box when copied. Approval must be requested from the publisher to reproduce this piece in hymn books and other permanent worship aids.

# Melody instruments in C

## Refrain 1

$\text{♩} = 52$

*Glory and praise to you, O Christ.*

Musical notation for Refrain 1, consisting of two staves. The top staff is in treble clef and the bottom staff is in bass clef. The key signature has one flat (B-flat). The time signature is 6/8. The music features a melody in the upper voice and a supporting bass line. The piece concludes with a double bar line and the word "Fine".

## Refrain 2

*Praise and honour to you, Lord Jesus.*

Musical notation for Refrain 2, consisting of two staves. The top staff is in treble clef and the bottom staff is in bass clef. The key signature has one flat (B-flat). The time signature is 6/8. The music features a melody in the upper voice and a supporting bass line. The piece concludes with a double bar line and the word "Fine".

## Refrains 3 and 4

*Praise to you ... king of eternal glory! / Glory to you ... Word of God!*

Musical notation for Refrains 3 and 4, consisting of two staves. The top staff is in treble clef and the bottom staff is in bass clef. The key signature has one flat (B-flat). The time signature is 6/8. The music features a melody in the upper voice and a supporting bass line. The piece concludes with a double bar line and the word "Fine".

## Verses

*D.C. al Fine*

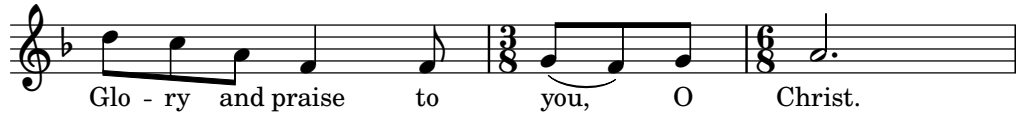
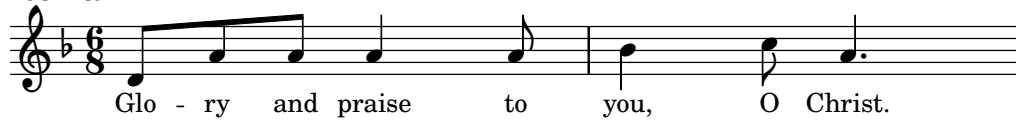
Musical notation for the Verses, consisting of two staves. The top staff is in treble clef and the bottom staff is in bass clef. The key signature has one flat (B-flat). The time signature is 6/8. The music features a melody in the upper voice and a supporting bass line. The piece concludes with a double bar line and the instruction "D.C. al Fine".

# 'Glory' and 'Praise'

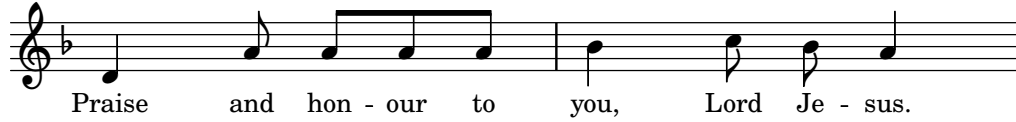
## Lenten Gospel Acclamations

CJ Olding

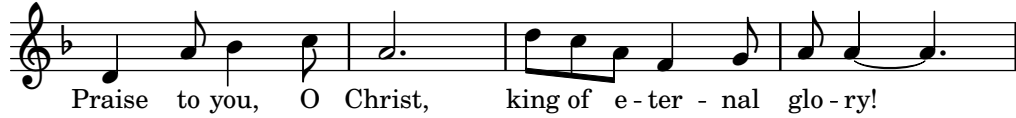
### Refrain 1



### Refrain 2



### Refrain 3



### Refrain 4

